

CURRENT PROBLEMS OF THE TRANSITION PERIOD

FROM STARČEVO
TO VINČA CULTURE



ИЗ СТАРЧЕВАЧКЕ У
ВИНЧАНСКУ КУЛТУРУ

АКТУЕЛНИ ПРОБЛЕМИ ПРЕЛАЗНОГ ПЕРИОДА

INTERNATIONAL ROUND TABLE

МЕЂУНАРОДНИ ОКРУГЛИ СТО

NARODNI MUZEJ ZRENJANIN
NATIONAL MUSEUM ZRENJANIN

NAUČNI SKUPOVI
SCIENTIFIC MEETINGS

Knjiga I
NAUČNI SKUP

Volume I
SCIENTIFIC MEETING

**PROBLEMI PRELAZNOG PERIODA
STARČEVAČKE U VINČANSKU KULTURU
CURRENT PROBLEMS OF THE TRANSITION PERIOD
FROM THE STARČEVO TO THE VINČA CULTURE**

Zrenjanin, 21–23. oktobar 1996. godine
Zrenjanin, 21–23 October 1996

Urednici/Editors

Glavni urednik/Editor in Chief: Božidar Vorgić
Odgovorni urednik/Responsible Editor: Bogdan Brukner

Uređivački odbor/Editorial board

Nikola Tasić
Borislav Jovanović
Snežana Marinković
Lazar Nikolić

Knjiga je posvećena akademiku prof. dr Bogdanu Brukneru

Zrenjanin, 2006.

**PROBLEMI PRELAZNOG PERIODA
STARČEVAČKE U VINČANSKU KULTURU**

**CURRENT PROBLEMS OF THE TRANSITION PERIOD
FROM THE STARČEVO TO THE VINČA CULTURE**

Izdavač/Publisher

Narodni muzej Zrenjanin
National Museum Zrenjanin

Prevod teksta/Translation

Lazar Nikolić

Lektor/Lector

Lidija Mustedanagić

Dizajn korica/Cover design

Dušan Marinković

Korektor/Corrector

Lazar Nikolić

Tiraž/Print run: 400

Štampa/Press: Alfa-graf NS

Publikacija je realizovana sredstvima Skupštine opštine Zrenjanin.
This publication was financed by Skupština opštine Zrenjanin.

CIP – Каталогизacija u publikaciji
Библиотека Матице српске

903(497)“6343/6347”(082)

**Научни скуп Проблеми прелазног периода старчевачке
у винчанску културу (2006 ; Зрењанин)**

Naučni skup Problemi prelaznog perioda starčevačke u
vinčansku kulturu, Zrenjanin, 21–23. oktobar 1996. godine =
Scientific Meeting Current Problems of the Transition Period
from the Starčevo to the Vinča Culture, Zrenjanin, 21–23
October 1996 / urednici Božidar Vorgić, Bogdan Brukner ;
prevod teksta Lazar Nikolić. – Zrenjanin : Narodni muzej,
2006 (Novi Sad : Alfa-graf NS). – 240 str. : ilustr. ; 30
cm. – (Naučni skupovi / Narodni muzej, Zrenjanin ; knj.
1 = Scientific Meetings / National Museum, Zrenjanin ;
Vol. 1)

Uparedo srp. tekst i engl. prevod. – Tiraž 400. – Bibliografija uz svaki rad.

ISBN 86-85961-06-8

a) Археолошка налазишта – Балканске државе – Неолит –
Зборници b) Неолит, млађи – Балканске државе – Зборници
c) Неолит, старији – Балканске државе – Зборници

COBISS.SR-ID 213300999

CONTENT / SADRŽAJ:

Efstratiou, Nikos & Duška Urem-Kotsos: The Neolithic Site of Makri in Thrace – Greece, Its Contribution to the Issue of the Neolithic Sequence of the Sixth Millennium in the Balkans.....	7
Tasić, Nenad: Absolute Chronology of the White Painted Decoration on the Starčevo Culture Pottery	
Nikolov, Vassil:	31
Beobachtungen über den Übergang zwischen dem Früh – und dem Spätneolithikum in Thrakien und im Strumatal	43
Jovanović, Borislav: Early and Late Neolithic of the Danube Valley – Relations in Chronology	53
Marinković, Snežana: Starčevo Culture in Central Banat	63
Petrović, Jelka: Late Starčevo Settlement at Golokut near Vizić	81
Draşovean, Florin: The Starčevo-Criş to the Vinča Transition in Northern Banat	93
Horváth, Ferenc: A Contribution to the Question of Cultural Changes at the Turn of the Early and Middle Neolithic in the Tisza-Marosz Region	111
Biagi, Paolo & Elisabetta Starnini: Some Aspects of the Transition Period Between the Early and the Middle Neolithic Along the Adriatic Coastlines.....	135
Sanev, Voislav: The Anzabegovo-Vršnik Group and the Problems of the Late Neolithic in Eastern Macedonia.....	147
Brukner, Bogdan: A Contribution to the Study of (Dis)continuity at the transition from the Starčevo to the Vinča culture group	165
Bogdanović, Milenko: Early Vinča in Central Serbia.....	179
Bánffy, Eszter: Southeastern Connections of a Peculiar Vessel Type in the Early Chalcolithic Transdanubia.....	197
Chapman, John: Why was the Vinča-Belo Brdo tell occupied for so long?.....	213
Madas, Dimitrije: Two stratigraphy problems in Slatina site near Paraćin.....	237

IN LIEU OF THE FOREWARD

This book, an almanac of written reports from the scientific conference held in Zrenjanin in 1996, entitled *Topical Issues of the Changeover from Starčevo to Vinča Cultures*, has a long history. Nearly 10 long years have passed since the 1996 conference during which a number of our distinguished individuals and authorities on archeology have left the scientific circle. The ones that went first were Dragoslav Srejović and Milutin Garašanin, undoubtedly two of the most prominent authorities on prehistoric archeology in the second half of the last century. Their departure was followed by Ljubomir Bukvić's and Bogdan Brukner's, academician and the "spiritus movens" of this and many other conferences held in Vojvodina. The latter is credited for organizing this important gathering. This Almanac was compiled and partly printed during his life time. Sadly, he did not live long enough to hold this book in his hands. The authors of this paper and the participants of the Zrenjanin Round Table wish to take this opportunity to express their appreciation to him.

Bogdan Brukner's initiative to give publicity to the subject of the changeover period between the two Neolithic cultures – Starčevo and Vinča – gathered about twenty renowned archeological names from southeastern Europe: Italy, Hungary, Romania, Bulgaria, Macedonia and Greece. The meeting enabled them to exchange opinions, discuss the cultures, mutual influences, time parallelism in the large area encircled by the northern coastline of the Adriatic Sea, the Black Sea and the Pannonian Plane in the north, and the Aegean localities in the south. Opinions about chronology and relationships between the Pannonian, Balkan and Mediterranean cultures crossed as did the views on the genesis and mutual influences of the areas of linear ceramics, Starčevo, Körös, Zelenikovo and the early cultures embodied in the Vinča complex. Meticulously chosen authors of particular subjects and a very vivacious discussion at the Round Table shrewdly spurred by the "mediator" B. Brukner, brought into the open the topical nature of the problem and pointed out to the need for further research of the early prehistory of the Pannonian Plane and southeastern Europe as a whole.

UMESTO PREDGOVORA

Knjiga, Zbornik referata sa naučnog skupa održanog u Zrenjaninu 1996. godine, pod naslovom „Aktuelni problemi prelaska iz starčevačke u vinčansku kulturu“ ima svoju dugu istoriju. Od održavanja skupa 1996. godine, do danas prošlo je bezmalo 10 godina, deset dugih godina, u kojima je iz kruga učesnika otišlo nekoliko značajnih imena iz naše arheologije. Pre svega to su Dragoslav Srejović i Milutin Garašanin, nesumnjivo dva najveća imena praistorijske arheologije u drugoj polovini prošlog veka, zatim Ljubomir Bukvić i najzad, otišao je i „spiritus movens“ ovog i mnogih drugih skupova koji su održani na teritoriji Vojvodine akademik Bogdan Brukner. Zahvaljujući njegovom angažovanju organizovan je ovaj značajan skup i bio pripremljen i delom odštampan ovaj Zbornik za njegova života. Nažalost on nije imao zadovoljstvo da drži ovu knjigu u svojim rukama. Ostaje, autorima priloga, učesnicima okruglog stola u Zrenjaninu, da mu ovom prilikom iskažu svoju zahvalnost.

Zamisao Bogdana Bruknera da se aktuelizuje problematika vremena na prelazu dve izrazite neolitske kulture – starčevačke i vinčanske, okupila je dvadesetak uglednih imena arheologije jugoistočne Evrope: iz Italije, Mađarske, Rumunije, Bugarske, Makedonije i Grčke. To je bila dobra prilika za razmenu mišljenja, diskusiju o kulturama, međusobnim uticajima, vremenskim paralelizmima na velikom prostoru omeđenom severnom Jadranskom obalom i Crnim Morem i Panonskom nizijom na severu do egejskih nalazišta na jugu. Ukrstila su se mišljenja o hronologiji, odnosima panonskih, balkanskih i mediteranskih kultura, o genezi i uzajamnim uticajima područja linearne keramike, Starčeva, Körösa, Zelenikova i mladih oličenih u vinčanskom kompleksu. Precizno odabrani autori pojedinih tema i vrlo živa diskusija koja se na okruglom stolu odvijala, podsticana mudrim potezima „medijatora“, Bogdana Bruknera, pokazala je aktuelnost problematike i ukazala na potrebu daljih istraživanja u ovoj oblasti rane praistorije Panonske nizije i jugoistočne Evrope u celini.

Glavni akcenti, posmatrani regionalno, mogli bi da se rezimiraju kroz sledeće geografske oblasti:

Locally observed, the focal points could be summarized according to the following three geographical regions:

Thrace and Northern Greece:

The study of the findings from the Neolithic locality in Makra within the broader chronological context of the Balkan Neolith in the 4th century BC; the changeover from the culture of painted ceramics into the culture of black-glazed ceramics in the Western part of Thrace / N. Efstratiou, D. Urem-Kotsos, V. Nikolov/.

The central Balkan, the inner Danube-basin, Eastern Pannonia: the Starčevo culture, ornaments of white painted ceramics; representation of Starčevo settlements in central Banat and Srem; the Starčevo/Criș-Vinča changeover in northern Banat; continuity and discontinuity in the Starčevo-Vinča changeover / N. Tasić; S. Marinković; J. Petrović; F. Drașovean; B. Brukner/.

The Balkans and the Danube-basin:

The relation between the cultures of Körös, Starčevo and the linear ceramics, new claims and C-14 dates; chronological correlation between the early and the late neolith in the Danube-basin; the importance of the Zelenikovo II group; similarities to the neolith of Donja Struma; the Vinča A horizon in central Serbia; the Starčevo IIb and the Vinča A parallelism; chalco-litization routs in southwestern Transdanubia towards prominent influences from the South-East; social processes in the Balkans' late neolith within the context of individual/domestic production and strategy of a wider community; the stratigraphy of the multi-layer locality of Slatina in central Pomoravlje (Morava River basin) / F. Horvath; B. Jovanović; V. Sanev; M. Bogdanović; E. Banffy; J. Chapman; D. Madas/.

The Adriatic Littoral:

The middle neolith, links between the East and the West coasts of the Adriatic and the importance of this sea as a nautical route between the South and the North at the beginning of the 6th century B.C. / P. Biagi, E. Starnini /.

This diverse and interesting discussion produced an unambiguous conclusion that the expected results of new research works, and their publishing, represent in fact the starting point for the promotion of the understanding of this and other evolutionary changes in southeastern Europe's prehistoric cultures.

Trakija i severna Grčka:

Studija nalaza sa neolitskog lokaliteta Makri, u širem kontekstu hronologije balkanskog neolita u VI milenijumu stare ere; Prelaz od kulture sa slikanom keramikom na kulture crnoglačane keramike u zapadnoj zoni Trakije (N. Efstaratiou, D. Urem-Kotsos, V. Nikolov).

Centralni Balkan, srednje Podunavlje, istočna Panonija:

Starčevačka kultura, ornamentika belog slikanja keramike; Zastupljenost starčevačkih naselja u Srednjem Banatu i Sremu; Prelaz između Starčeva – Criș i Vinče u severnom Banatu; Kontinuitet i diskontinuitet u prelazu Starčevo – Vinča (N. Tasić, S. Marinković, J. Petrović, F. Drașovean, B. Brukner (†))

Balkan, Podunavlje:

Odnos između kulture Körös, Starčevo i Linearne keramike, novi argumenti i C-14 datumi; Hronološki odnosi ranog i kasnog neolita u Podunavlju; Značaj grupe Zelenikovo II, sličnost sa neolitom Donje Strume; Horizont Vinče A u Centralnoj Srbiji, paralelizam Starčeva IIb i Vinče A; Putevi halkolitizacije jugozapadne Transdanubije prema izrazitim uticajima sa Jugoistoka; Socijalni procesi u kasnom neolitu Balkana u kontekstu individualne (kućne) proizvodnje i strategije šire zajednice; Stratigrafija višeslojnog nalazišta Slatina u srednjem Pomoravlju (F. Horvath, B. Jovanović, V. Sanev, M. Bogdanović, E. Banffy, J. Chapman, D. Madas).

Jadransko primorje:

Srednji neolit, veze istočne i zapadne obale Jadrana i značajna uloga ovog mora kao trgovačkog puta od juga ka severu na početku VI milenijuma stare ere (P. Biagi, E. Starnini).

Unutar ove raznovrsne i zanimljive diskusije izdvaja se jasan zaključak da očekivani rezultati novih istraživanja i njihovo publikovanje čine osnovni preduslov za unapređenje znanja u ovoj, kao i drugim evolutivnim promenama

*Nikola Tasić
Borislav Jovanović*

Nikos Efstratiou
Duška Urem-Kotsos
University of Thessaloniki
Greece

Nikos Efstratiou,
Duška Urem-Kotsos
Univerzitet u Solunu
Grčka

THE NEOLITHIC SITE OF MAKRI IN THRACE – GREECE

Its Contribution to the Issue of the Neolithic Sequence of the Sixth Millennium in the Balkans.

A. The Site

Makri is situated in Aegean Thrace, approximately 30 kilometers to the West of Evros (Maritsa) delta and 60 kilometers to the East of the well-known site of Paradimi in the Rhodope plain (Fig. 1). It is the only systematic Neolithic excavation carried out so far in Thrace and for that reason the findings are very important (Efstratiou 1996, 461). It is worth remembering that the well-known site of Paradimi is the only trial-dug and that there are many unanswered questions regarding its alleged key-role as a typical Neolithic site for the area of coastal Thrace.

Makri is a low mound close to the sea, situated on a rocky edge which rises forty meters above the sea-level and next to a cave, well-known from the beginning of the century for its prehistoric finds. The site is strategically positioned overlooking the Thracian shore from the Evros river in the East, to the Ismaros mountain to the West, and the island of Samothrace in the South. Military trenches opened during the two World Wars – which can still be seen today – have caused extensive damage to the prehistoric deposits of the site.

B. The Data

B.1. The Makri area geologically belongs to a wider southern Rhodope region which is extremely complex and interesting. At least two flint sources found a few kilometers away are known to have provided raw material for the Palaeolithic tools which have been found recently in the area (Ammeran, Efstratiou and Adam, 1994). The same volcanic sources must also

NEOLITSKI LOKALITET MAKRI U TRAKIJI – GRČKA

Njegov doprinos problemu razvoja neolita šestog milenijuma na Balkanu.

A. Lokalitet

Makri se nalazi u Egejskoj Trakiji, otprilike 30 kilometara zapadno od delte Evrosa (Marice) i 60 kilometara istočno od poznatog lokaliteta Paradimi u Rodopskoj niziji (sl. 1). Jedino je sistematsko neolitsko istraživanje izvedeno dosad u Trakiji i zato su njegovi nalazi vrlo važni (Efstratiou 1996, 461). Važno je podsetiti da je poznati lokalitet Paradimi bio samo probno iskopavanje i da postoje mnoga nerešena pitanja u vezi sa njegovom, navodno, ključnom ulogom, kao tipičnog neolitskog lokaliteta na području priobalne Trakije.

Makri je nizak brežuljak u blizini mora, smešten na kamenitoj padini koja se uzdiže četrdeset metara iznad nivoa mora i tik iza pećine, čuvane po preistorijskim nalazima sa početka stoleća. Lokalitet strategijski leži tako da se može videti tračka obala reke Evros na istoku, planina Ismaros na zapadu i ostrvo Samotraka na jugu. Vojni rovovi, otvoreni tokom obeju svetskih ratova – koji mogu i danas da se vide – prouzrokovali su znatnu štetu na preistorijskim slojevima lokaliteta.

B. Podaci

B.1. Područje Makrija geološki pripada širem južnom regionu Rodopa, inače veoma kompleksnom i zanimljivom. Za bar dva nalazišta kremenja, koja se nalaze nekoliko kilometara dalje, zna se da su obezbeđivala sirovinu za, u ovom području, nedavno pronađena paleolitska oruđa (Ammeran, Efstratiou i Adam 1994). Iste vulkanske resurse

have been used by the inhabitants of the Neolithic Makri for tool making, as recent studies have shown (Demetriadis and Skourtopoulou 1996). A wide variety of stones existing in the vicinity of the settlement have also been recognized as the material used for making polished tools, usually collected from the shore as pebbles (Melfos et al., 1996). Geomorphological factors proved to be very important for understanding not only of the extent of human occupation at the site, but of the post-depositional processes as well. More specifically, the site is situated on a typical travertine formation; abundant water sources might have favored the occupation of the site, while events like floods had far-reaching effects on the habitation phases, stratigraphy and depositional processes: distinction between cultural and natural layers (study of deposited sediments which often get the form of habitation floors) (Fumanal – Ferrer 1996).

B.2. The actual mound which covers at least 4000 m² consists of successive cultural layers and it is easily distinguished from the surrounding flat alluvial area by its slight elevation. Human habitation traces, however, are not limited to the mound, but they extend, according to the archaeological evidence, such as surface investigations and trial digs (where stratified prehistoric deposits and material of a possible earlier date were found), to the distance of at least 50 meters to the East and to the North of it (Efstratiou 1992, 643). An interesting aspect of these trial digs is that many stratified cultural deposits were found underneath a 2 meter thick alluvial stratum with no surface indications of any kind. Moreover, the depth of the Neolithic deposit at the site is difficult to estimate because of the great differences which appear in both the excavational units opened at the center and along the periphery of the mound (4.5 meters and 2.5 meters respectively).

B.3. There have been eight excavation seasons so far at Makri (1988–1995), and a number of excavation reports have already been published (Kallindzi and Efstratiou 1988, 499; Efstratiou 1989, 595; 1990, 595; 1991, 425). The study of all the retrieved data, such as architecture, ceramics, lithics, burials, economy – although still being processed – allow certain conclusions to

je i stanovništvo neolitskog Makrija koristilo za pravljenje alatki, kako su to i nedavne studije pokazale (Demetriadis i Skourtopoulou 1996). Uočeno je i raznovrsno kamenje, koji se nalazi u blizini naselja, kao materijal korišćen za pravljenje glačanog oruđa. Ono je obično u vidu oblutaka, prikupljano sa obale (Melfos i dr. 1996). Geomorfološki činioci pokazali su se važnim za razumevanje ne samo dužine naseljavanja ovog lokaliteta, već i post-depozicione procese. Određenije: lokalitet se nalazi na tipičnoj formaciji travertina; obilni izvori voda mogli su pogodovati naseljavanju lokaliteta, ali su događaji kao što su poplave imale dalekosežne posledice na faze stanovanja, stratigrafiju i depozicione procese, tj. na razliku između kulturnih i prirodnih slojeva (izučavanje geo-depozitnih naslaga koje često dobijaju izgled stambenih podova; Fumanal – Ferrer 1996).

B.2. Sadašnji brežuljak, koji pokriva bar 4.000 m², sadrži sukcesivne kulturne slojeve i, svojim blagim uzdizanjem, lako se izdvaja od okolnog ravničarskog aluvijalnog područja. Ipak, tragovi ljudskog prebivališta nisu ograničeni samo na brežuljak. Prema arheološkim podacima, kao što su površinska istraživanja i probni rovovi (kojima su otkriveni slojeviti preistorijski nanosi i materijal ranog datuma), oni se protežu do udaljenosti od bar 50 metara istočno i severno od njega (Efstratiou 1992, 643). Zanimljiv aspekt ovih probnih rovova je da su mnogi stratifikovani kulturni nanosi nađeni ispod 2 metra debelog aluvijalnog sloja, bez površinskih tragova bilo koje vrste. Osim toga, dubinu neolitskog depozita na lokalitetu teško je proceniti zbog velikih razlika koje se javljaju u otkopnim jedinicama otvorenim u centru i po periferiji brežuljaka (4.5 metra i 2.5 metra).

B.3. Dosad je bilo osam kampanja iskopavanja Makrija (1988–1995), a nekoliko izvještaja sa iskopavanja već je objavljeno (Kallindzi i Efstratiou 1988, 499; Efstratiou 1989, 595; 1990, 595; 1991, 425). Izučavanje svih dobijenih podataka koji se tiču arhitekture, keramike, kamena, sahranjivanja, ekonomije – iako još uvek u toku – dozvoljava da se izvedu izvesni zaključci. Iako preliminarni, ovi zaključci daju jednu real-

be reached; though preliminary, these conclusions present an accurate picture of this Thracian Neolithic community, dated to the middle of the sixth millennium B.C.

B.3.1. The stratigraphic evidence of the site, based on the architecture, pottery characteristics and the presence of a thick destruction layer all over the settlement, indicate two phases in consequence: a short early one, Makri I, and a much longer later one, Makri II (Fig. 2). Within Makri II, four habitation horizons (well-defined by clay structures and successive plaster floors), characterize four distinctive architectural phases, similar in cultural characteristics. A number of C-14 dates (cal) from the destruction layer and just above it, give an absolute dating around the middle of the sixth millennium B.C. for the beginning of Makri II (GrN-21266: 6580±40 B.C., GrN-21267: 6560±30 B.C., GrN-20475: 6640±50 B.C.).

Relative chronology from the site comes to support these estimates: the ceramic sequence of Makri II covers the Middle and the Late Neolithic horizons in Balkan terms and is characterized by persistence of monochrome, dark-burnished tradition. Following the pottery typology of Aegean Thrace and the wider southern Balkan region, Makri's main horizon (II) could be related to the Paradimi I and II and Sitagroi I and II traditions. What is intriguing in respect to the ceramic tradition of the site, are the ceramic features of the early Makri I phase which seem to represent a pre-Sitagroi I and Paradimi I stages. Whether this constitutes an Early Neolithic phase or just an early stage of the Middle and Late Neolithic horizons already known in the area, is not yet clear. If the former is confirmed by additional excavation evidence, then it might be possible to describe – in typological and cultural terms – the characteristics of an Early Neolithic period in the area which, surprisingly, is at the moment missing from the whole eastern Greek Macedonia and Aegean Thrace.

In any case, it is believed that the site of Makri has revealed the occupation record of a long and uninterrupted habitation phase which chronologically covers the whole sixth millennium B.C. (in calibrated terms) and represents the transition from the Early Neolithic (First Temperate Neolithic) to mature Late Neolithic (Mature

nu sliku ove tračke neolitske zajednice, datirane u sredinu šestog milenijuma pre n. e.

B.3.1. Stratigrafski podaci sa lokaliteta, zasnovani na arhitekturi, karakteristikama grnčarije i pojavi jednog moćnog sloja uništavanja svuda po naselju, ukazuju na dve uzastopne faze: jednu kratku, raniju (Makri I) i jednu dužu, kasniju (Makri II), (sl. 2). Unutar Makrija II, četiri stambena horizonta (jasno definisana strukturom gline i sukcesivnim podnicama), karakterišu četiri izdvojene građevinske faze, slične po kulturnim karakteristikama. Nekoliko C-14 datuma (kalibriranih) iz sloja uništavanja i neposredno iznad njega, daju apsolutno datovanje oko sredine šestog milenijuma pre n.e. za početak Makrija II (GrN21266: 6580±40 pre n. e., GrN-21267: 6560±30 pre n. e., GrN-20475: 6640±50 pre n. e.).

Relativna hronologija lokaliteta podržava ove ocene: razvoj keramike Makrija II pokriva srednji i kasni neolitski horizont (po balkanskim standardima) i okarakterisan je održavanjem monohromne tradicije tamnog pečenja (dark-burnished). Prema tipologiji grnčarije Egejske Trakije i šireg južno-balkanskog regiona, glavni horizont Makrija (II) bi mogao biti vezan za tradiciju Paradimi I i II i Sitagroi I i II. Ono što je zanimljivo, sa aspekta keramičke tradicije lokaliteta, jesu keramički oblici rane faze Makrija koji izgleda predstavljaju pre-Sitagroi i Paradimi stadijum. Da li ovo predstavlja rano-neolitsku fazu ili samo već poznate rane stadijume srednjeg i kasnog neolita ovog područja, još nije jasno. Ako se prethodno potvrdi podacima sa dodatnih iskopavanja, bilo bi moguće opisati – u tipološkim i kulturnim okvirima – karakteristike rano-neolitskog razdoblja područja koje, začudo, trenutno nedostaje celoj istočno-grčkoj Makedoniji i Egejskoj Trakiji.

U svakom slučaju, verovano je da lokalitet Makri otkriva podatak o naseljavanju tokom jedne duge i neporemećene faze stanovanja koja hronološki pokriva ceo šesti milenijum pre n. e. (u kalibriranim okvirima) i predstavlja prelaz od ranog neolita – „First Temperate Neolithic“ (FTN) u zreo kasni neolit – „Mature Temperate Neolithic“ (MTN) u ovom egejskom delu Balkana. Prema tome, predstavljajući sintezu arheološkog istraživanja Makrija II i, u manjoj meri, Makrija I, moguće je fokusirati nekoliko ključnih obeležja ovog prelaza.

Temperate Neolithic) in this Aegean part of the Balkans. Thus, by presenting a synthesis of the archaeological record of Makri II and to a lesser extent of Makri I, it is possible to focus on some key features of this transition.

B.3.2. Regarding the overall picture of human presence at Makri, it is suspected that the extent of occupation differed in the two periods: a limited early residential area was restricted to the top of the mound, and the later one covered a much wider area (Fig. 3). This could easily mean that the early occupation (Makri I) was a small nucleated village consisting of very few habitation units situated at the center of the mound, a form of occupation which changed dramatically during the Late Neolithic period (Makri II), this time including a much more complicated arrangement and use of space (communal places and houses). If this is correct, it marks a noticeable change in the form of habitation and possibly in the socioeconomic organization between the Early and Late Neolithic periods.

B.3.3. Unfortunately, the exposure of Makri I deposits has so far been extremely limited and the material evidence derive mainly from the main phase of the site (Makri II). It includes: i. Plentiful architectural remains of post-framed houses (wattle-and-daub) with well preserved plaster floors, burned wooden roofs and clay structures, such as ovens, fireplaces, platforms, storage and garbage pits (Fig. 4) and a communal storage complex with vases of various sizes and a number of possible ritual objects, ii. A rich pottery sequence and an impressive number of ceramic objects, such as figurines and trapezae, iii. Four Neolithic burials found underneath the house floors, iv. Evidence of the technology employed at the site (pottery, flint, polished stone and bone tools), v. evidence regarding the economy (animal and fish bones, carbonized seeds), vi. Data which could lead to the reconstruction of the palaeoenvironment: geomorphology, sedimentology, palynology and anthracology.

B.3.3.1. Regarding the above mentioned categories of archaeological material, the following observations are interesting:

i. The prevailing architectural picture of Makri II is that of a tradition which persists

B.3.2. Posmatrajući opštu sliku ljudskog prisustva na Makriju, izgleda da se stepen naseljavanja razlikovao u dva razdoblja: jedno rano rezidentno područje bilo je ograničeno na vrh brežuljaka, dok je kasnije pokrivalo mnogo širi prostor (sl. 3). To može značiti da je rano naselje (Makri I) bilo malo seosko jezgro, sastojeći se od samo nekoliko stambenih jedinice smeštenih prema centru brežuljka. Ovo je bio oblik naseljavanja koji se dramatično promenio tokom kasnijeg neolitskog perioda (Makri II), ovog puta uključujući mnogo složeniji raspored i upotrebu prostora (zajednički objekti i kuće). Ako je ovo tačno, to znači upadljivu promenu forme prebivališta, a moguće i socioekonomske organizacije, između ranog i kasnog razdoblja neolita.

B.3.3. Nažalost, pristup slojevima Makrija I dosad je bio krajnje ograničen, a materijalni podaci dobijani su uglavnom sa glavne faze lokaliteta (Makri II). Oni uključuju: i. Brojne građevinske ostatke ozidanih kuća (pleter i lep) s dobro očuvanim podnicama, izgorelim drvenim krovovima i glinenim strukturama kao što su: peći, ognjišta, platforme, skladište i otpadne jame (sl. 4), zatim jedan zajednički kompleks skladišta s posudama raznih veličina, kao i izvestan broj mogućih ritualnih objekata, ii. Bogat razvoj grnčarstva i impresivan broj keramičkih predmeta, kao što su figurine i žrtvenici, iii. Četiri neolitska groba otkrivena ispod kućnih podova, iv. Tragove tehnologije korišćene na lokalitetu (grnčarija, kremen, glačan kamen i koštani alat), v. Materijal koji se odnosi na ekonomiju (životinjske i riblje kosti, karbonizovano semenje), vi. Podatke koji bi mogli omogućiti rekonstrukcija paleo-okruženja: geomorfološke, sedimentacione, palinološke i antrakološke.

B.3.3.1. S obzirom na gore navedene kategorije arheološkog materijala, interesantna su sledeća zapažanja:

i. Dominantna slika arhitekture Makrija II je u tradiciji koja traje stotinama godina – od sredine šestog i tokom dobrog dela petog milenijuma – bez ikakve uočljive promene. Posle izučavanja uporednog materijala iz različitih faza naseljavanja na mikro- (planoi kuća, tehnike gradnje) i polu-mikro

for hundreds of years – from the middle of the sixth and well inside the the fifth millennia – without any noticeable change. After studying comparative material from the different occupation phases on a micro-scale (house-plans, construction techniques) and semi-micro scale levels (structures, clay features), it seems that the arrangement and use of space did not vary through the four habitation phases of Makri. Moreover, it was possible to observe closed units, both at the center and on the periphery of the site, such as the interiors of houses and their features, open spaces and storage areas, where possible differences may indicate something more than a simple functional change.

- ii. Concerning the ceramic sequence of Makri (I and II), it was possible to comment on a number of interesting points regarding issues of ceramic change, technological and stylistic development. Such observations often constitute the essence of archaeological debate when cultural sequences and reconstructions concerning prehistory are attempted.

The early Makri I phase is characterized by monochrome dark wares (black, gray and brown), rarely decorated with incisions and plastic pellets; painted sherds – white-on-red – are extremely few. The shapes include semispherical and conical phiale, basins and vases with vertical sides (Fig. 5). Bases are mainly flat and very rarely in the form of a ring (Fig. 6) or diskoid; noticeable is the presence of vases with very low legs (Fig. 5: 7), (Urem-Kotsos and Efstratiou 1993).

Moving to the later Makri II phase, although the main features of Makri I, such as the dark colors continue to exist, some important changes concerning the shape repertory, decoration and technology become apparent. These are: the appearance of open and closed sharply carinated shapes (Fig. 7 and Fig. 10) and wide open vases with four high cylindrical legs (Fig. 8: 2–3); the increase of the number of vases with legs and the complete disappearance of vases with low legs; rims of vases are often thick and decorated

nivou (struktura, osobine gline), izgleda da raspored i upotreba prostora nisu varirali tokom četiri naseobinske faze Makrija. Štaviše, i u centru i na periferiji lokaliteta mogle su se posmatrati zatvorene celine, kao na primer unutrašnjosti kuća i njihovi oblici, čistine i skladišni prostori – sve ono gde su moguće razlike mogle iskazati nešto više od jednostavne promene funkcije.

- ii. S obzirom na keramički materijal Makrija (I i II), moguće je komentarisati nekoliko interesantnih pitanja koja se odnose na probleme promene, tehnološkog i stilskog razvoja u keramici. Takva opažanja najčešće predstavljaju suštinu arheoloških rasprava kada su u pitanju kulturni razvoj i rekonstrukcije koje se odnose na preistoriju.

Ranu fazu, Makri I, karakteriše monohromno tamno posuđe (crno, sivo i braon), retko ukrašeno urezivanjem i plastičnim kuglicama; bojani fragmenti – belo-na-crvenom – veoma su malobrojni. Oblici uključuju semisferične i konične „fijale“, posude („basins“) i vaze s vertikalnim zidovima (sl. 5). Dna su uglavnom ravna i vrlo retko prstenasta (sl. 6) ili diskoidna; upadljivo je prisustvo posuda na veoma niskim nogama (sl. 5: 7), (Urem-Kotsos i Efstratiou 1993).

Prelazeći na kasniju fazu, Makri II, iako glavne osobine Makrija I, kao na primer tamne boje, nastavljaju da se javljaju, ispoljavaju se i neke važne promene u pogledu repertoara oblika, dekoracije i tehnologije. To su: pojava otvorenih i zatvorenih oštro čunastih (carinated) oblika (sl. 7 i 10) i široko otvorene posude s četiri visoke cilindrične noge (sl. 8: 2–3); povećanje broja posuda s nogama i potpun nestanak posuda s niskim nogama; obodi posuda su često deblji i ukrašeni urezima (sl. 9: 1) ili kanelurama (sl. 9: 2); javljaju se takođe dugmetaste drške (sl. 11: 4, 6). Što se dekoracije tiče, crno-bojene posude javljaju se po prvi put zajedno sa urezanim (sl. 11: 5), kanelovanim (sl. 11: 3, 7) i posudama ukrašenim utiskivanjem prstom (sl. 11: 4, 6); grafitna dekoracija javlja se takođe u ovaj fazi, dok su bojani fragmenti i dalje veoma retki. Uočljiv nov element, vezan za Makri II fazu, je česta pojava otisaka asure na ravnom dnu posuda (sl. 12).

with incisions (Fig. 9: 1) or channels (Fig. 9: 2); button-like handles also make their appearance (Fig. 11: 4, 6). As far as the decoration is concerned, black-topped vases appear for the first time together with incised (Fig. 11: 5), channeled (Fig. 11: 3, 7) and finger-impressed decorated vases (Fig. 11: 4, 6); graphite decoration appears also in this phase, while painted sherds continue to be extremely rare. A noticeable new element related to the Makri II phase is the frequent appearance of matte impressions on the flat vase bases (Fig. 12).

ii.1. Technological studies based on the ceramics of Makri II, although not conclusive, indicate that there exists a persistence of a number of similar features (Giouni 1995, 607). The very same techniques of "coiling" for vase construction and heavy burnishing and polishing for surface treatment persist. However, there are some changes which distinguish Makri I from Makri II and they are indirectly related to pottery technology: use of mattes in the process of pottery making either in the stage of vase construction or surface treatment and drying.

ii.2. Generally, it might be said that despite some new features which appear in the beginning of Makri II, what characterizes the site as a whole is a long and uninterrupted assemblage of monochrome wares which mark a continuous and mature tradition of pottery making. Contrary to the changes which appear in the habitation patterns between Makri I and Makri II, ceramic styles and technology appear to be much less affected. They continue the dark-burnished tradition with some changes in the shape repertory and the decoration, while new methods are employed during the secondary stages of pottery construction (use of mattes during burnishing, scrubbing, polishing, decoration).

iii. The repertory of other ceramic objects, such as trapezae (Fig. 13 and Fig. 14) and figurines, remains unchanged throughout the Neolithic deposit of Makri II; unfortunately, this kind of material from the levels

ii.1.

Istraživanja tehnologije, bazirana na keramici Makrija II, iako ne zaključna, pokazuju da postoji zadržavanje nekih sličnih svojstava (Giouni 1995, 607). Opstaju potpuno iste tehnike obrade gline (coiling) kod izrađivanja posuda i jako pečenje („burnishing“), kao i glačanje pri površinskoj obradi. Ipak, postoje neke promene koje odvajaju Makri II od Makrija I i one su indirektno vezane za grnčarsku tehnologiju. To je primena asure u procesu pravljenja grnčarije, bilo u fazi izrađivanje posude ili pri površinskoj obradi i sušenju.

ii.2. Uopšteno, može se reći da, bez obzira na neke nove oblike koji se javljaju na početku Makrija II, ono što karakteriše lokalitet kao celinu jeste duga i neprekinuta sekvenca monohromnog posuđa, koji označava kontinuiranu i zrelu tradiciju pravljenja grnčarije. Suprotno promenama koje se javljaju u obrascima naseljavanja Makrija I i Makrija II, čini se da su keramički stilovi i tehnologija time bili mnogo manje zahvaćeni. Oni nastavljaju tradiciju tamnog pečenja (dark-burnished) s nekim promenama u repertoaru oblika i dekoraciji, primenjujući nove metode samo tokom sekundarnih faza izrade grnčarije (korišćenje asure pri pečenju, trljanje, poliranje, dekoracija).

iii. Repertoar drugih keramičkih objekata, kao na primer žrtvenika (sl. 13 i 14) i figurina, ostaje nepromenjen u svim neolitskim slojevima Makrija II; nažalost, ova vrsta materijala sa nivoa Makri I još uvek je veoma oskudna. Pogotovo su interesantne na ovom lokalitetu figurine koje su prilično brojne u odnosu na ukupno iskopavano područje; one potiču iz svih otkopnih slojeve Makrija II i to bez promena u njihovom stilu. Iako su deo duge balkanske tradicije izrade figurina, uočljive su neke karakteristike jedne moguće lokalne varijante, možda priobalne tradicije figurina, koja bi se protezala od Rodopske nizije na zapadu (Paradimi) do turske obale (Hoca cesme), (Efstratiou i Kallindzi 1995).

iv. Grobovi nađeni na Makriju potiču iz slojeva glavne II faze i nude pravu sliku lo-

of Makri I, is still extremely scanty. Particularly informative is the figurine material of the site, which is numerous in relation to the total area excavated; it comes from all the excavated layers of Makri II with no changes in their style. Although a part of the long Balkan tradition of figurine making, some characteristics of a possible local variation, possibly a coastal figurine tradition, which extends from the Rhodope plain in the West (Paradimi) to the Turkish coast (Hoca cesme), were noticeable (Efstratiou and Kallindzi 1995).

- iv. The burials found at Makri come from the layers of the main phase II and offer a fair picture of burial practices at the site; these are typical Neolithic (Aggelarakis and Efstratiou 1996, 11). Unfortunately, no comparative material exists from the earlier, Makri I, phase.
 - v. The lithics – ground and polished stones, flint, obsidian and bone tools – show no significant typological change through the different layers of Makri II. This is indicative of the same persisting level of technological specialization which responded to similar socio-economic needs for hundreds of years during the sixth millennium.
 - vi. Both Makri I and II are generally characterized by a well documented mixed economy, which is based on the cultivation of all familiar domesticated cereals and animals; the diet was supplemented by fruits, nuts, hunted animals, sea-shells and fish. It must be emphasized here that the detailed study of the stratigraphic distribution of carbonized seeds and bone material has not been concluded yet; therefore, minor changes in the community's production strategies, which might exist between the two Neolithic phases of the site, cannot be documented.
 - vii. A number of interesting observations are derived from palaeoenvironmental studies which were carried out at the site. The analysis of samples from sediments taken from specific excavational trenches have been extremely helpful in distinguishing kalnih pogrebnih običaja koji su tipično neolitski (Aggelarakis i Efstratiou 1996, 11). Nažalost, nikakav uporedan materijal ne postoji iz ranije, Makri I, faze.
 - v. Lomljen kamen i glačno kamenje, kremen, opsidijan i koštana oruđa ne pokazuju značajne tipološke promene po različitim slojevima Makrija II. Ovo je indikativno za isti dugotrajni nivo tehnološke specijalizacije koji odgovora sličnim društveno-ekonomskim potrebama stotinama godina tokom šestog milenijuma.
 - vi. Makri I i II generalno karakteriše dobro dokumentovana mešovita privreda, koja se zasniva na obradi svih poznatih pripitomljenih cereali i životinja; ishrana je bila dopunjavana voćem, orasima, ulovljenim životinjama, morskim školjkama i ribom. Ovde se mora istaći da još nije završeno detaljno izučavanje stratigrafske distribucije karbonizovanog semena i koštanog materijala; zato nisu mogle biti dokumentovane manje promene u proizvodnim strategijama zajednice, koje su mogle postojati između dve neolitske faze lokaliteta.
 - vii. Nekoliko interesantnih opažanja poteklo je od istraživanja paleo-okruženja vršenih na lokalitetu. Analiza uzoraka sedimenata uzetih iz određenih sondi bila je od izuzetne pomoći u odvajanju prirodnih slojeva od arheoloških depozita (Fumanal 1996). Oni često obeležavaju duge faze napuštanja naselja koje je teško arheološki definisati; ovo je bilo pogotovo od koristi u slučaju rane Makri I faze, gde se postavljalo pitanje polusedelačkog ili naseljavanja sa periodičnim napuštanjem (iz perspektive sličnih pojava koje su se odigrale u toku FTN na Balkanu; McPherron i Srejović 1988, 468).
- Podjednako važni su bili pokušaji da se rekonstruišu paleo-ekološki parametri na Makriju; ovo je postignuto istraživanjem karbonizovanog drveta iz ognjišta i građevinskog materijala (Ntinou 1996, 165). Cilj je bio da se izmeri stepen i intenzitet ljudske intervencije u području oko naselja, manifestovane uglavnom promenom obradivog tla, pretraživanjima i iskorišćavanjem

natural layers from archaeological deposits (Fumanal 1996). These often mark long phases of abandonment, which are difficult to define archaeologically; this was particularly helpful in the case of the early Makri I phase, where the question of a semi-sedentary or a periodically abandoned occupation was examined (in view of the similar phenomena taking place during the FTN in the Balkans) (McPherron and Srejić 1988, 468).

Equally important were the attempts to reconstruct the palaeoenvironmental parameters at Makri; this was achieved through the study of carbonized wood from fireplaces and building materials (Ntinou 1996, 165). The aim was to measure the extent and intensity of human intervention in the area around the settlement, manifested mainly through changes in the production land, grasing or browsing and forest exploitation. One may hope that this could provide some indirect hints regarding size and duration of organized human presence in the area. The information available so far comes from the destruction layer of Makri I (where C-14 dates come from) and indicates that human intervention had not altered the surrounding forest area, which was still "Neolithic" in the middle of the sixth millenium (presence of deciduous oak, fraxinus etc.). This could easily mean that the area had not been overexploited at the time (deforestation) as a result of a previous long and intense habitation and production practices.

C. Discussion

The position of the Neolithic settlement of Makri firstly as a typical site of the Aegean Neolithic sequence and, secondly, in comparison to the sites of the wider southeastern Balkan region, can be described as follows:

- i. Makri represents a typical sixth millennium Neolithic settlement in Aegean Thrace. Although an Early Neolithic phase cannot be certainly documented at the moment – in terms of presence of the Karanovo I ceramic sequence (white-on-red) and in view of complete absence of similar finds from the whole region of eastern Greek Macedo-

šuma. Možemo se nadati da bi ovo moglo pružiti neke indirektne nagoveštaje koji se odnose na veličinu i trajanje organizovanog ljudskog prisustva u ovom području. Dosad raspoloživa informacija potiče iz sloja uništavanja Makrija I (odakle i C-14 datumi) i pokazuje da ljudska intervencija nije promenila okolno šumsko područje, koje je bilo „neolitsko“ još sredinom šestog milenijuma (prisustvo kratkovekog hras-ta, fraxinusa itd.). Ovo lako može značiti da ovo područje nije bilo preterano eksploatisano u to vreme (krčenjem šuma), što je rezultat prethodnog dugotrajnog i intenzivnog naseljavanja i proizvodne prakse.

C. Diskusija

Položaj neolitskog naselja Makri, u prvom redu kao tipičnog lokaliteta neolitskog razvoja Egeje, a potom u poređenju prema lokalitetima šireg jugoistočnog balkanskog regiona, može biti predstavljeno na sledeći način:

- i. Makri predstavlja tipično neolitsko naselje šestog milenijuma u Egejskoj Trakiji. Iako rano-neolitska faza trenutno ne može biti sigurno dokumentovana – u smislu prisustva Karanovo I keramičke faze (belo-nacrvenom) i sa aspekta potpunog odsustva sličnih nalaza u čitavom regionu istočne grčke Makedonije i Trakije – rani Makri I predstavlja najraniju kulturnu fazu nađenu u ovom području, datovanu pre 5.500 pre n. e. (sa kalibracijom). Da li je rano neolitsko razdoblje zaista izostalo ili nije bilo još uspostavljeno zbog geomorfoloških razloga ili odsustva sistematskog istraživanja, još nije poznato. Nedavno otkriće srednje paleolitskih tragova naselja u Rodopskoj niziji i mogućeg pre-neolitskog stratuma, nađenog slučajno u blizini Makrija, učinili su drugo verovatnijim. Ipak, važnost ovog ranog materijala Makrija I za razvoj Egejske Trakije je očigledan. Njegove pre-Sitagroi I karakteristike i jaki Paradimi oblici uvećavaju mogućnost da je takozvani „Paradimi horizont“ u Egejskoj Trakiji lokalni rani razvoj i definišu jedan dugotrajan kulturni regionalizam koji kulminira tokom kasnog neolita. Ovde se može sugerisati kako je moguće da jaka i dugotrajna lo-

nia and Thrace – the early Makri I constitutes the earliest cultural phase found in the area, dated prior to 5500 B.C. (cal). Whether an Early Neolithic period is really absent or has not been found yet, because of geomorphological reasons or lack of systematic research, is still now known. The recent discovery of Middle Palaeolithic habitation traces in the Rhodope plain and a possible pre-Neolithic stratum found accidentally in the vicinity of Makri make the latter more probable. The importance of this Makri I early material for the Aegean Thracian sequence is, however, apparent. Its pre-Sitagroi I characteristics and the strong Paradimi features increase the possibility that the so-called “Paradimi horizon” in Aegean Thrace is a local early development and defines a long lasting cultural regionalism which culminates during the Late Neolithic. It could be suggested here that it is possible that strong and persisting local subsistence and ecological parameters can create, in the long term, phenomena of cultural regionalism which may be responsible for local peculiarities.

- ii. The following Makri phase has all the characteristics of a mature Late Neolithic culture, covering the second half of the sixth millennium and the beginning of the fifth.
- iii. In terms of general cultural traits, both Makri I and II present a homogenous archaeological material (ceramics, economy, technology), although some differences do exist mainly as far as habitation patterns and use of space are concerned. Thus, Makri I is a small nucleated habitation unit limited to the top of the mound, consisting probably of a few houses built immediately above the natural bedrock with one habitation phase and traces of several clay floors. The Neolithic deposit does not exceed 1.5 meters, with limited quantities of architectural debris indicating a short-lived settlement. Makri II, on the other hand, occupies the whole mound with extensive habitation and architectural traces; it is obvious that organized occupation during this period was much more extensive and complex,

kalna samodovoljnost i ekološki parametri kreiraju, na duži rok, fenomene kulturnog regionalizma koji može biti odgovoran i za lokalne specifičnosti.

- ii. Sledeća faza Makrija, koja pokriva drugu polovinu šestog milenijuma i početak petog, ima sve karakteristike zrele kasno-neolitske kulture.
- iii. U okviru opštih kulturnih obeležja Makri I i II predstavljaju homogen arheološki materijal (keramika, ekonomija, tehnologija), iako neke razlike postoje uglavnom što se obrazaca naseljavanja i upotrebe prostora tiče. Makri I je malo naseobinsko jedinično jezgro ograničeno na vrh brežuljaka, sastojeći se verovatno od nekoliko kuća, izgrađenih odmah iznad čvrste prirodne podloge, sa jednom fazom naseljavanja i tragovima nekoliko zemljanih podova. Neolitski depozit ne prelazi 1.5 metar, sa ograničenom količinom građevinskog debrisa, pokazujući time kratkotrajno naseljenje. Makri II, međutim, okupira ceo brežuljak, sa opsežnim naseljavanjem i tragovima arhitekture; jasno je da je organizovano naseljavanje tokom ovog razdoblja bilo mnogo obuhvatnije i kompleksnije, pošto 3.5 metra depozita, bogatog kulturnim i građevinskim debrisom, ukazuje na kontinuirano ljudsko prisustvo na ovom lokalitetu bar pet stotina godina; ovo pogotovo ističu četiri građevinske faze koje su stratigrafski izdvojene.

Po prvi put su, u smislu planske organizacije, detektovani stambeni (ozidane kuće) i zajednički objekti (skladišni kompleks u centru). Zato se može pretpostaviti da dok je Makri I bio vrlo male površine, Makri II je iskusio rast populacije i ekspanziju, pokrivajući mnogo šire područje u formi raširenog sela. Ovde je takođe vredno pomenuti da je naseljavanje permanentno u obe faze, iako se veća stambena mobilnost mora odnositi na Makri I, imajući u vidu njegovo ograničeno prostorno i vremensko trajanje.

- iv. Ipak, ove značajane razlike među fazama Makrija izgleda da se ne odnose na dru-

while the 3.5 meters deposit, rich in cultural and architectural debris, points to a continuous human presence at the site for at least five hundred years; this is particularly emphasized by the four building phases which have been stratigraphically isolated.

In terms of plan organization, residential (post-framed houses) and communal places (storage complex in the center) are detected for the first time. Therefore, it might be assumed that while Makri I was a very small area, Makri II was experiencing a growth of population and ecistic expansion, covering a much wider area, in the form of an extensive village. It is also worth mentioning here that in both phases the occupation was permanent, although a greater residential mobility must apply to Makri I, considering its limited space and time duration.

iv. However, these significant differences between the two phases of Makri do not seem to apply to other categories of material evidence. The changes which appear are not so much cultural, but are the results of an increasing social and economic complexity (style, intensification in production etc.). Therefore, the transition from an early phase – whether Early Neolithic or transitional – to the mature Late Neolithic culture in Aegean Thrace, is not dramatic or marked by discontinuities; on the contrary, it looks as an internal evolution of the already existing cultural traits and socioeconomic parameters.

D. Conclusions

If an attempt is made now to compare the evidence from the Aegean Thrace with the development in northern Balkan region, a number of observations are interesting:

- i. According to the available C-14 dates, Makri seems to be contemporary with the Starčevo culture (5650–5240 B.C.) and the early stages of Vinča (5240–3900 B.C.) (Tringham and Krstić 1990, 52).
- ii. The transition from Makri I to Makri II – around 5500 B.C. – is chronological-

ge kategorije materijala. Promene koje se uočavaju nisu toliko kulturne, no rezultat sve jače društvene i ekonomske složenosti (stil, intenziviranje proizvodnje itd.). Zato prelaz od rane faze – da li ranog ili prelaznog neolita – u zrelu kasnoneolitsku kulturu u Egejskoj Trakiji nije dramatičan niti obeležen diskontinuitetom; naprotiv, on se čini kao unutrašnja evolucija već postojećih kulturnih obeležja i socioekonomskih parametara.

D. Zaključci

Ako sada napravimo jedan pokušaj poređenja podataka iz Egejske Trakije s razvojem u severno-balkanskom regionu, interesantna su ova opažanja:

- i. Prema raspoloživim C-14 datumima, Makri izgleda savremen sa Starčevo kulturom (5650–5240 pre n. e.) i ranom fazom Vinče (5240–3900 pre n. e.) (Tringham i Krstić 1990, 52).
- ii. Prelaz od Makrija I u Makri II – oko 5500 pre n. e. – hronološki je nekoliko stotina godina raniji u poređenju s prelaznim razdobljem između kasnog Starčeva i rane vinčanske kulture za koje je procenjeno da se odigralo između 5350 i 5150 pre n. e. (Tringham i Krstić 1990); ovo nije neobično obzirom na kulturne razvoje tokom šestog milenijuma u Egejsko-Anadoljskom području, koji su generalno uvek prethodili i to znatno više.
- iii. Nasuprot obeležjima kulturne diskontinuiranosti koji označavaju prelaz između ranog neolita (Starčevo) i zrelog neolita (kasni neolit – Vinča), život u obema fazama Makrija ne pokazuje značajne promene u većini aspekata socioekonomskog života (keramički stilovi, tehnologija, ekonomija). Jedini izuzetak je uočljiv rast populacije Makrija II, koji sledi iza perioda nisko-intenzivne/kratke okupacije Makrija I, kao i uočljiva promena u rasporedu naselja (kompleksno projektovano naselje sa rezidentalnim područjem i zajedničkim skladišnim mestima).

ly a few hundred years earlier, compared to the transitional period between the late Starčevo and early Vinča cultures, which was estimated to have happened between 5350 and 5150 B.C. (Tringham and Krstić 1990); this is not unusual in view of cultural developments during the sixth millennium in the Aegean-Anatolian area, which, in general, occurred much earlier.

iii. Contrary to the signs of cultural discontinuity which mark the transition between the Early Neolithic (Starčevo) and mature Neolithic (Late Neolithic – Vinča), life in both phases of Makri presents no significant changes in most aspects of socioeconomic life (ceramic styles, technology, economy). The only exception is the noticeable population growth of Makri II, which follows the low-intensity/short period occupation of Makri I, and the observed change in settlement patterns (complex village planning with residential areas and communal storage places),

iv. This continuity is particularly evident in the ceramic material – dark burnished wares – which is homogenous with no significant changes in style or technology in both Makri I and II. The observed changes in shapes seem to be more the result of an internal evolution and increasing material complexity than the introduction of a new pottery tradition.

This apparent cultural continuity in Aegean Thrace during the sixth millennium B.C. is impressively manifested by the long-lived settlement of Makri and its deep Neolithic deposits.

iv. Ovaj kontinuitet je pogotovo očigledan u keramičkom materijalu – tamno pečeno (dark-burnished) posuđe – koje je homogeno bez značajnijih promena u stilu ili tehnologiji i u Makriju I i II. Zapažene promene u oblicima izgledaju više kao rezultat unutrašnje evolucije i rastuće materijalne kompleksnosti, nego uvođenja nove grnčarske tradicije.

Ovaj očigledan kulturni kontinuitet u Egejskoj Trakiji tokom šestog milenijuma pre n.e. impresivno manifestuje baš dugotrajno naselje Makri i njegovi duboki neolitski slojevi.

REFERENCES

Aggelarakis, A. and Efstratiou, N., 1996.

Skeletal Remains from the Neolithic Site of Makri-Thrace. A Preliminary Report. Proceedings of the 2nd Symposium of Archaeometry, Thessaloniki, 11–21, Thessaloniki.

Ammeran, A., Efstratiou, N. and Adam E., 1994. First Evidence of Palaeolithic Finds in Aegean Thrace. 1st International Conference on the Palaeolithic of Greece, Giannena (in press).

Ntinou, M. and Badal, E., 1996.

Primeros resultados anthracologicos del yacimiento Neolitico de Makri (Tracia, Grecia). Actes du Colloque de Peigueux 1995, Supplement a la Revue d'Archaeometrie, 165–150.

Demetriadis, S. and Skourtopoulou, K., 1996. Characterisation of Lithic Materials by Petrographic and SEM Techniques. Towards Suggestions of Chipped Stone Provenance from Neolithic Sites in Northern Greece. 3rd Symposium of Archaeometry, Athens.

Efstratiou, N., 1989. Anaskafi Makris. Anaskafiki periodos 1989, Arheologiko Ergo sti Makedonia ke Thraki (AErgo Mak) 3, 595–697.

Efstratiou, N., 1990.

Neoteres erevnes sto neolithiko ikismo tis Makris, AErgo Mak 4, 595–613.

Efstratiou, N., 1991.

Neoteres endixis gia tin proistoriki egastasi sti Thraki, AErgo Mak 5, 425–439.

Efstratiou, N., 1992.

Proneolithika evrimata apo tin egiaki Thraki, AErgo Mak, 643–655.

Efstratiou, N. and Kallindzi, N., 1995.

Makri – Evrou. Excavations 1988–1993. A Guide (in press), Thessaloniki.

Efstratiou, N., 1996.

New Investigations in Thrace. In: Alram-Stern, E. (ed.) Die Aigaische Fruhezzeit, 567–580, Wien.

Fumal, Paul Ferrer, C., 1996.

Yacimiento Arqueologico de Makri: inferme sedimentologico (in press).

Giouni, P., 1995.

Pottery from Makri, Bulletin de Correspondance Hellenique, 119, vol II, 607–620.

Technological Analysis of the Neolithic Pottery from Makri, Bulletin de Correspondance Hellenique, 119, vol II, 607–620.

Kallindzi, N. and Efstratiou, N., 1988.

Anaskafi sti Makri Evrou, AErgo Mak 2, 499–511.

McPherron, A. and Srejović, D. (eds), 1988.

Divostin and the Neolithic of Central Serbia, Pittsburg.

Melfos, V., Stratouli, G., Vavelidis, M. and Efstratiou N., 1996.

Proelesi ke diakinisi ton proton ilon gia tin kataskevi liasmenon lithinon ergalion apo to neolithiko ikismo Makris-Evrou. 3rd Symposium of Archaeometry, Athens.

Tringham, R. and Krstić, D., 1990.

Selevac. A Neolithic Village in Yugoslavia. Los Angeles, California.

Urem-Kotsos, D. and Efstratiou, N., 1993.

I simvoli tis keramikis tipologias tis Makris sti meleti tis proistorikis exelisis sti Thraki, AErgo Mak 7, (in press).



Fig. 1. Map of Greece with the location of the site of Makri.

Sl. 1. Mapa Grčke sa položajem lokaliteta Makri.

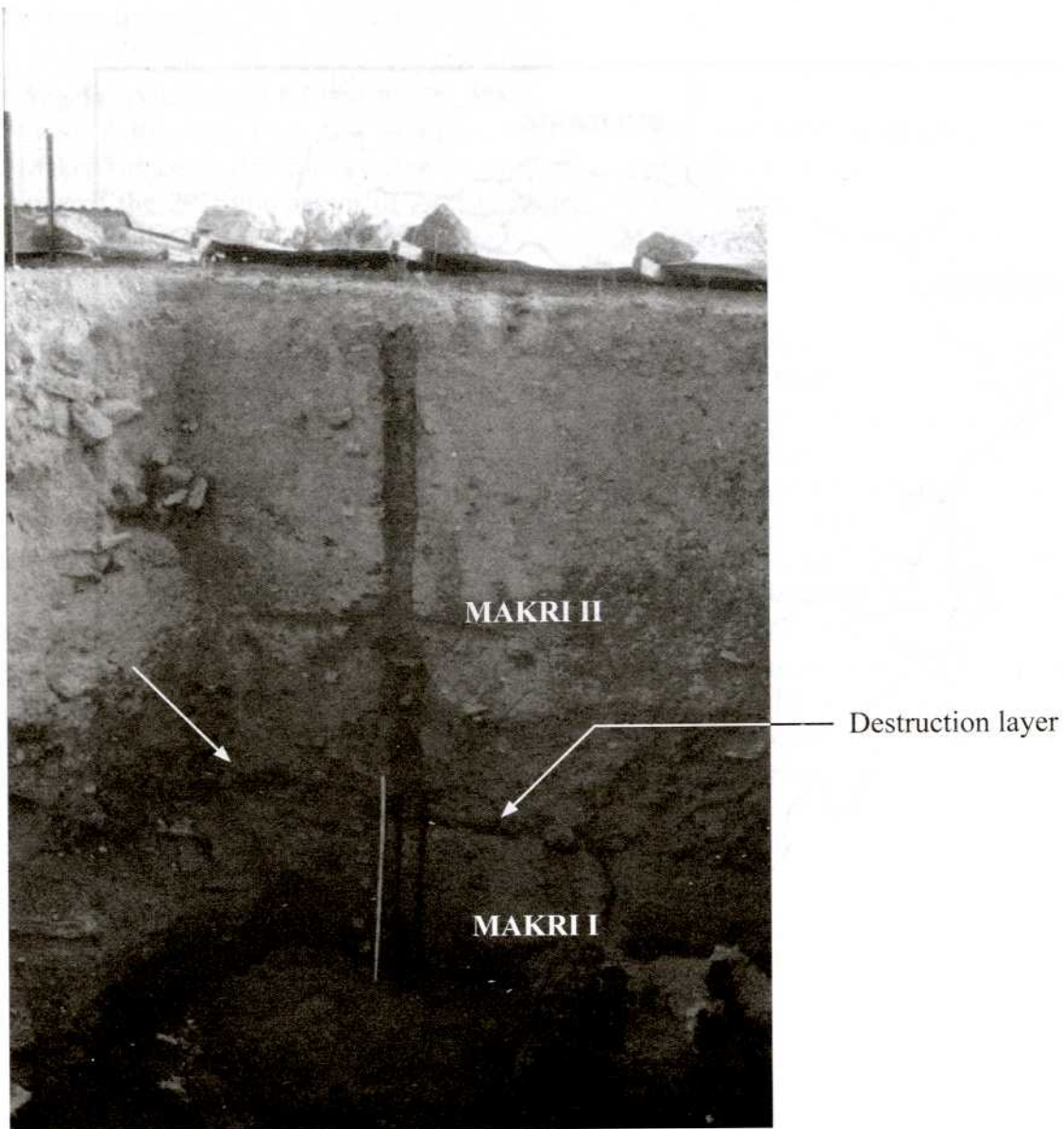


Fig. 2. View of the neolithic deposit in the deepest section of the site at the top of the mound. The destruction level between Makri I and II can be seen.

Sl. 2. Pogled na neolitski depozit na najdubljem sektoru lokaliteta pri vrhu brežuljka. Vidljiv je sloj uništavanja između Makrija I i II.

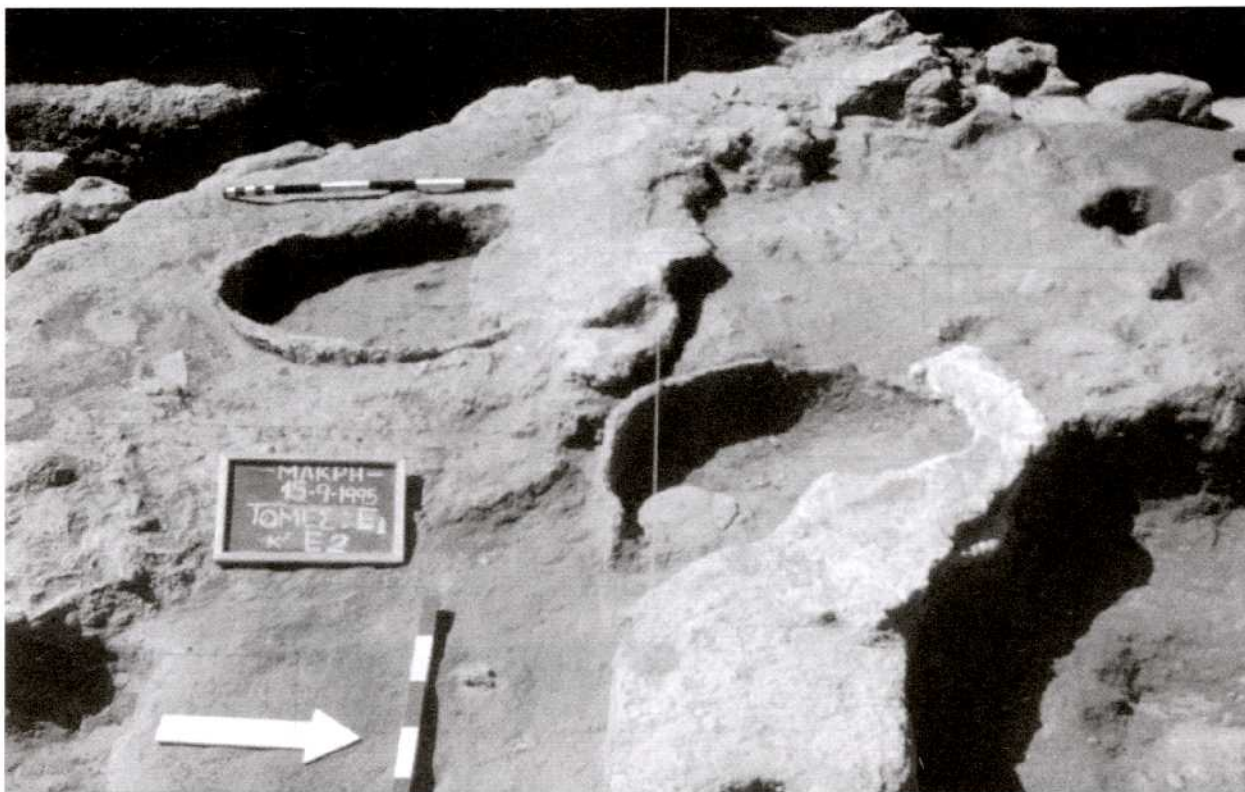


Fig. 3. Post-framed structures and plaster floors on the periphery of the site.

Sl. 3. Ozidane strukture i podnice na periferiji lokaliteta.



Fig. 4. Architectural remains in the central part of the settlement (storage vessels, platforms and clay structures).

Sl. 4. Arhitektonski ostaci u centralnom delu naselja (posude za skladištenje, postolja i zemljane strukture).

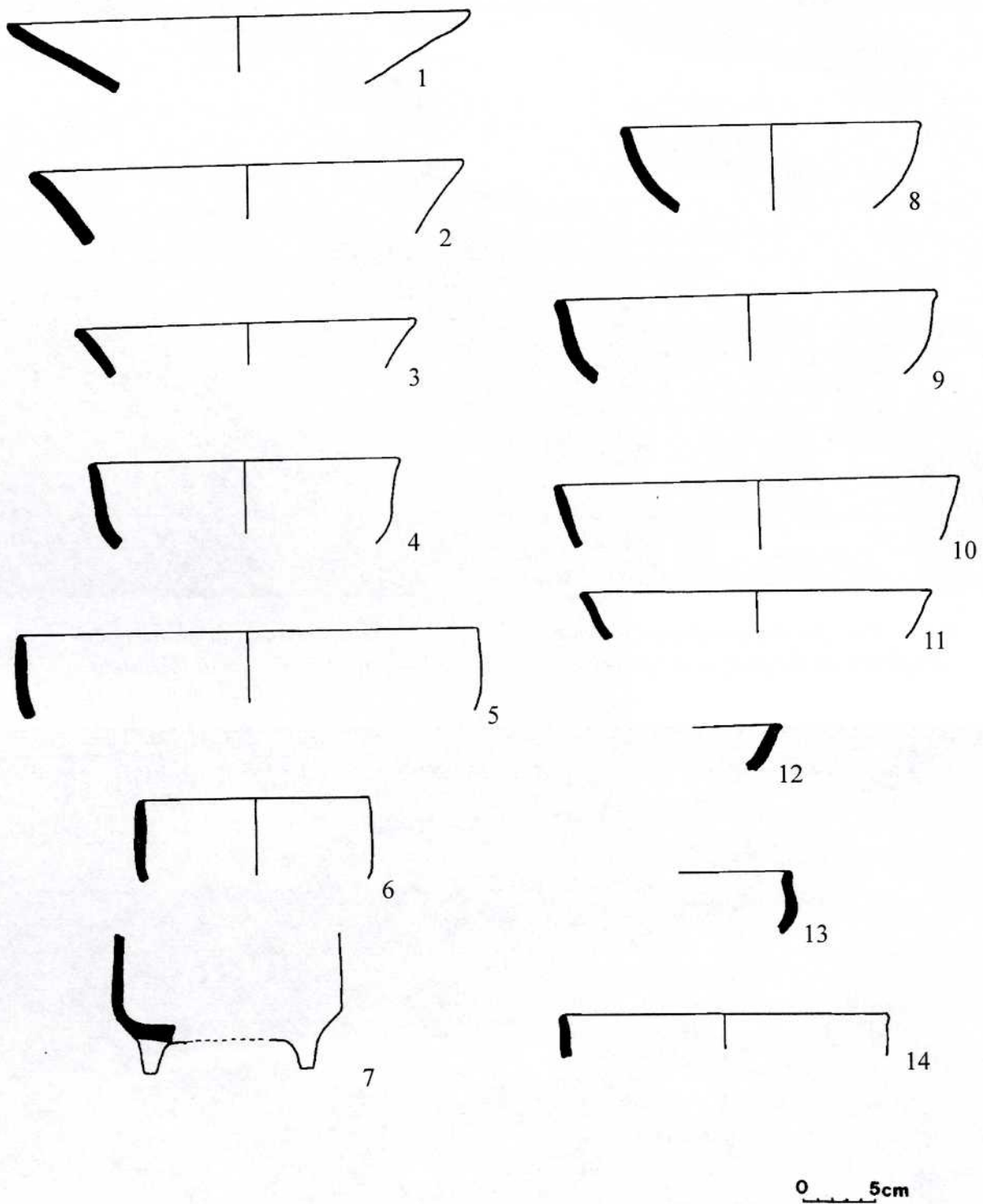


Fig. 5. Makri I. Main vessel shapes.

Sl. 5. Makri I. Osnovni oblici posuda.

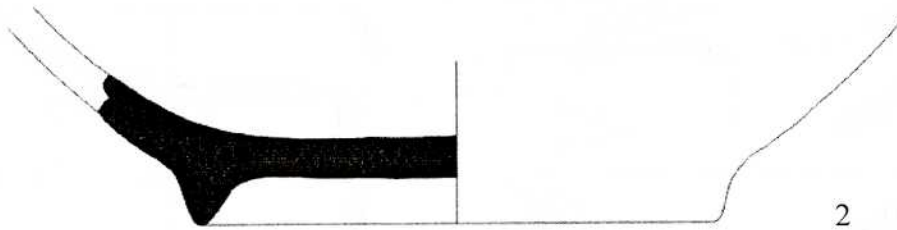
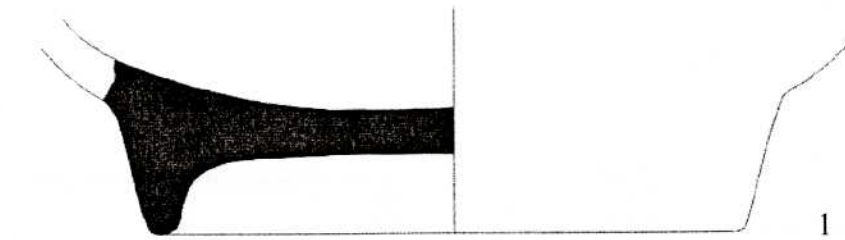


Fig. 6. Makri I. Ring-shaped bases.

Sl. 6. Prstenasta dna posuda.

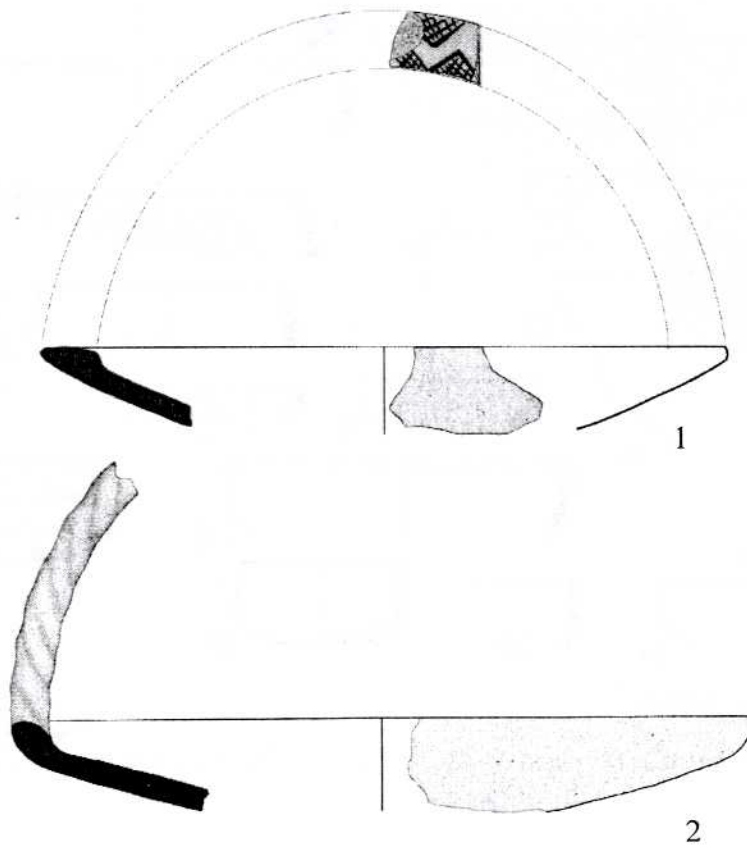


Fig. 9. Makri II. Plates with thickened rim:
1. incised decoration filled with white in-
crustation, 2. channeled decoration.

Sl. 9. Makri II. Tanjiri sa zadebljanim obo-
dom: 1. urezana dekoracija ispunjena be-
lom inkrustacijom, 2. kanelovana dekoracija.

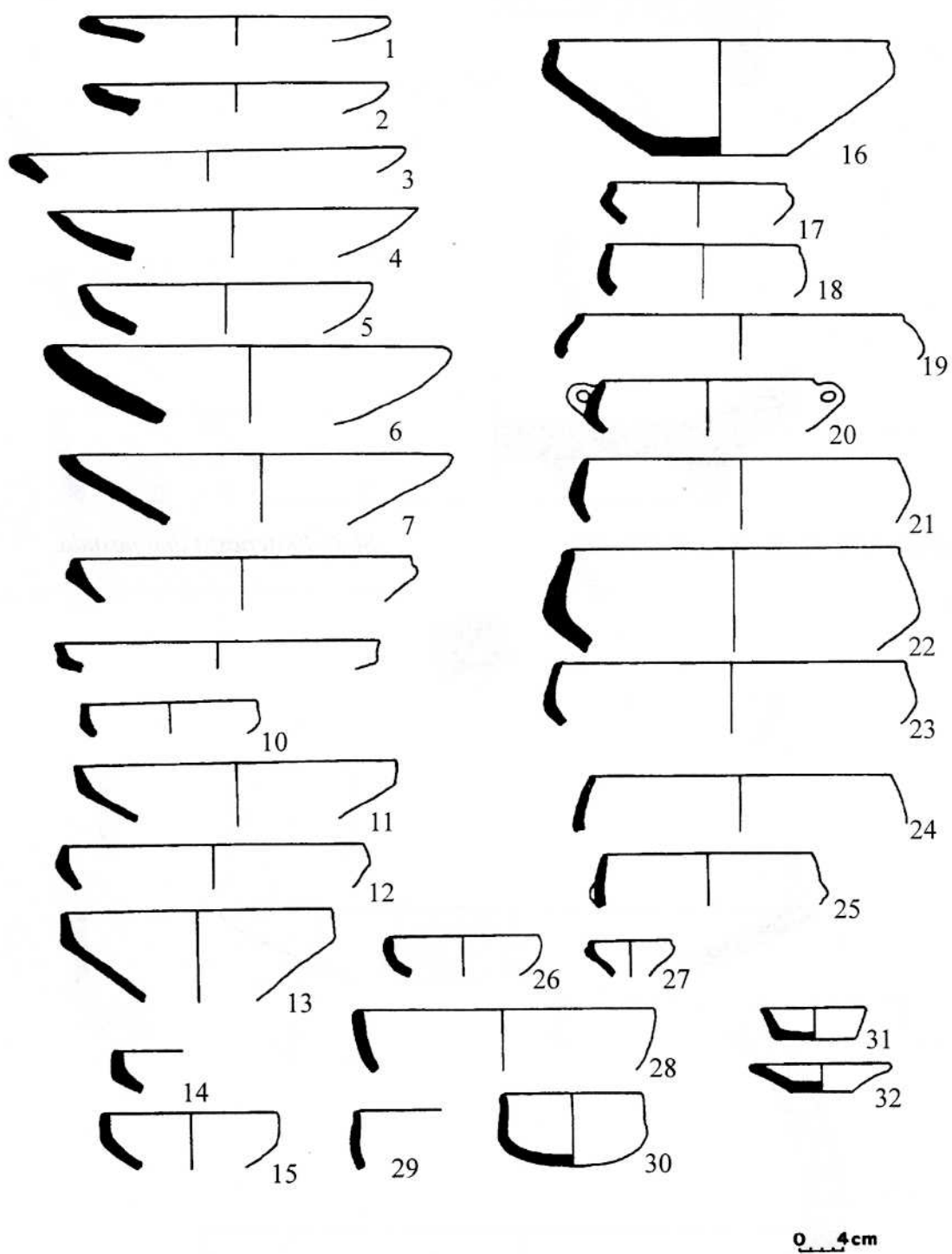


Fig. 7. Makri II. Main vessel shapes.

Sl. 7. Makri II. Osnovni oblici posuda.

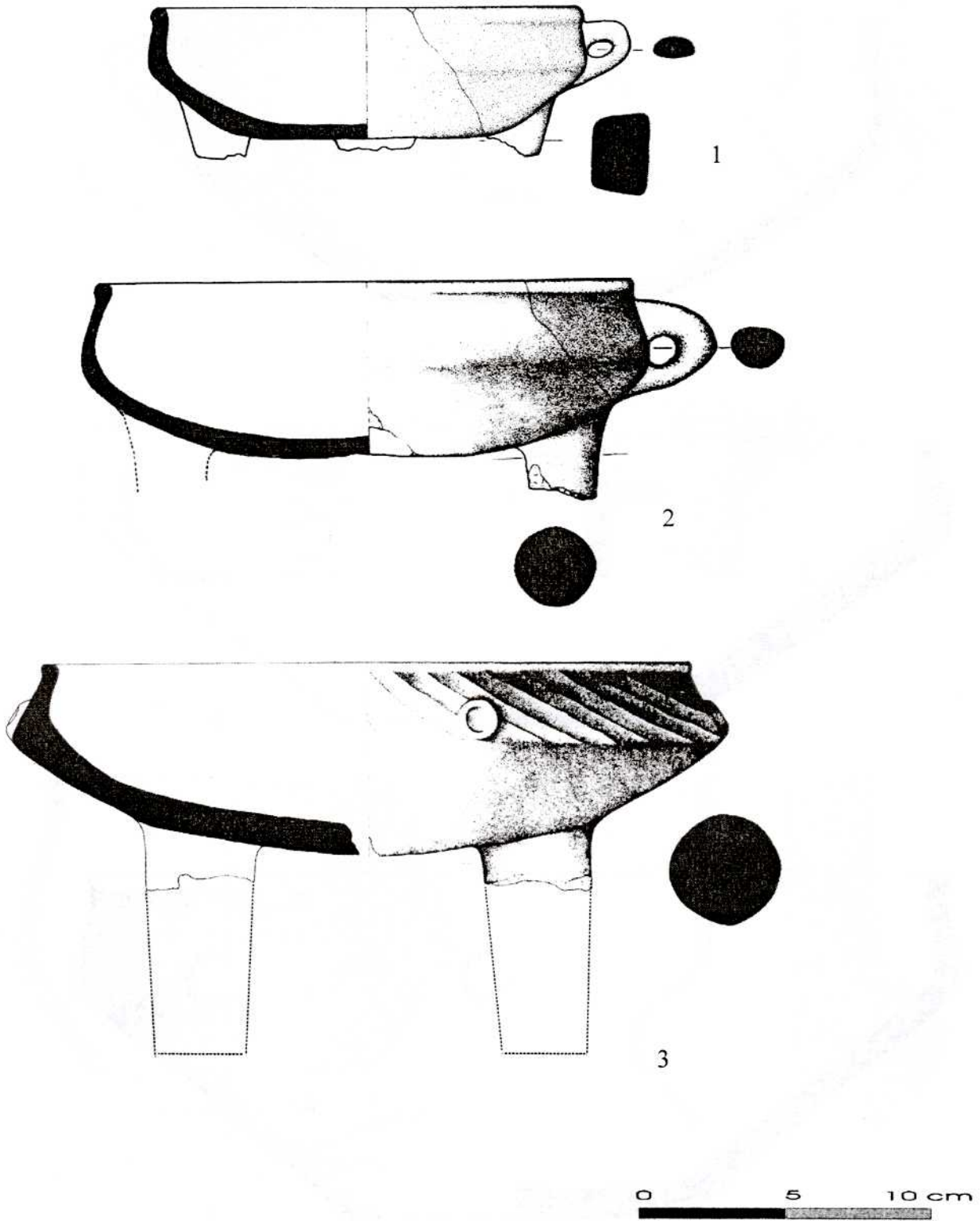


Fig. 8. Makri II. Four footed carinated vessels. Sl. 8. Makri II. Čunaste posude na četiri noge

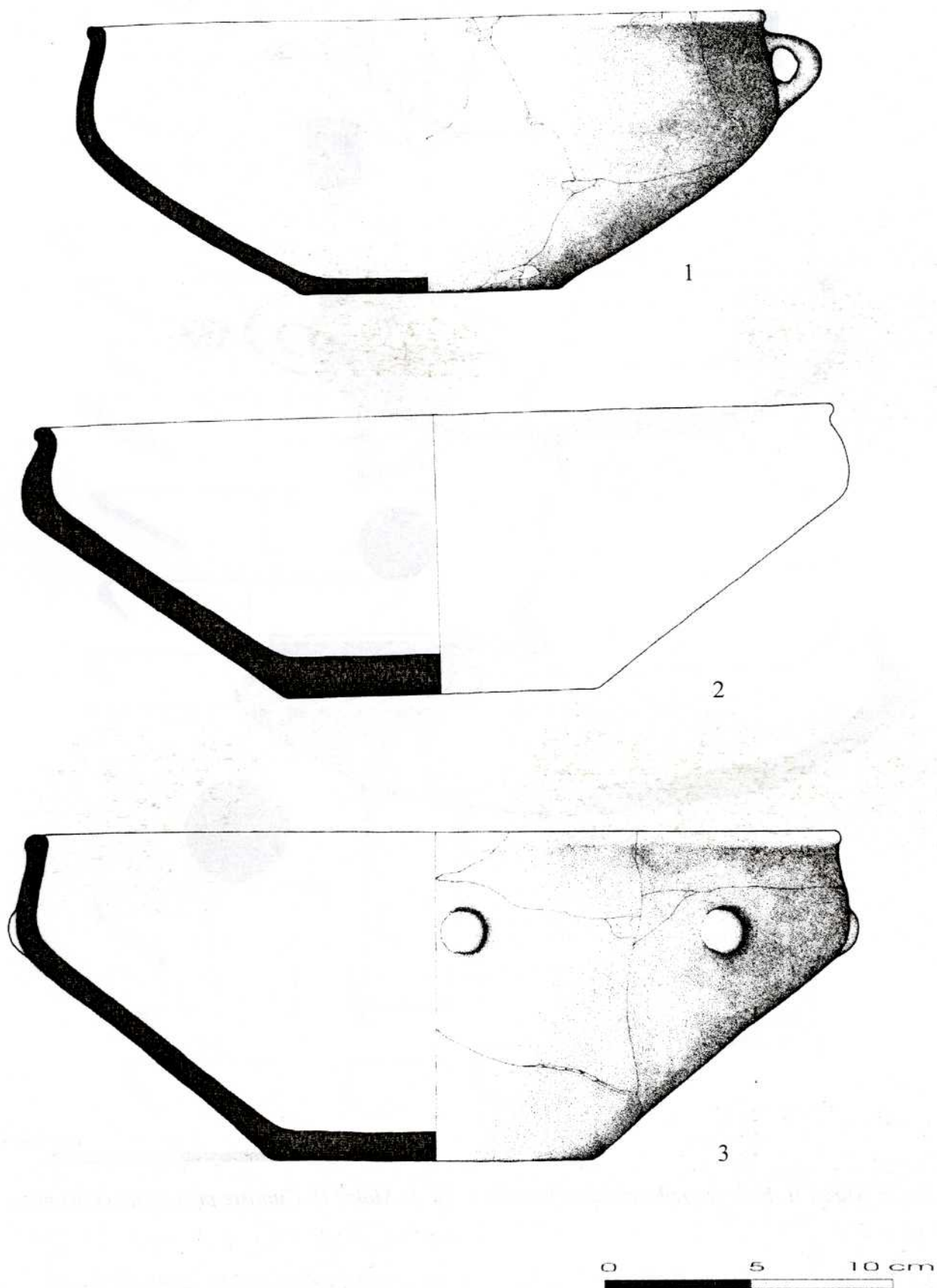


Fig. 10. Makri II. Carinated vessels.

Sl. 10. Makri II. Čunaste posude.

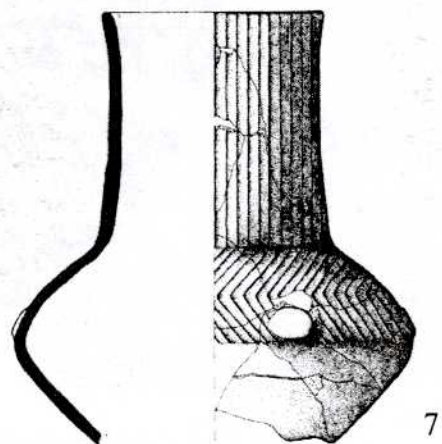
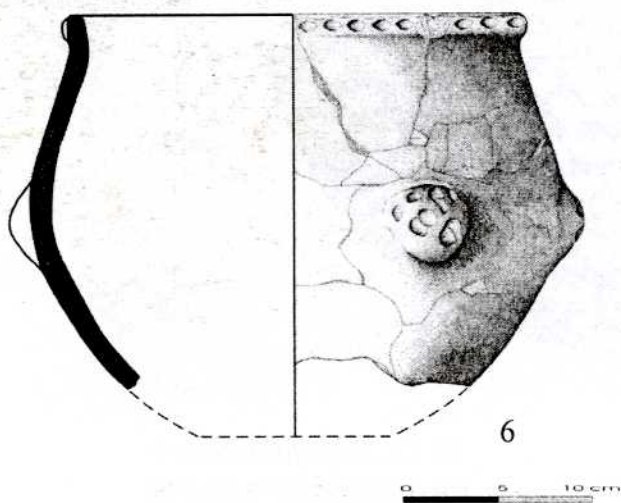
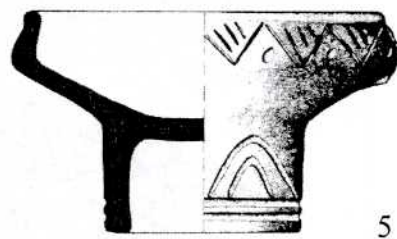
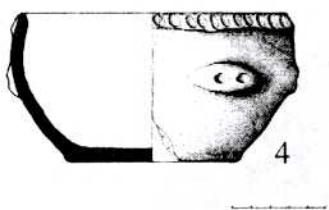
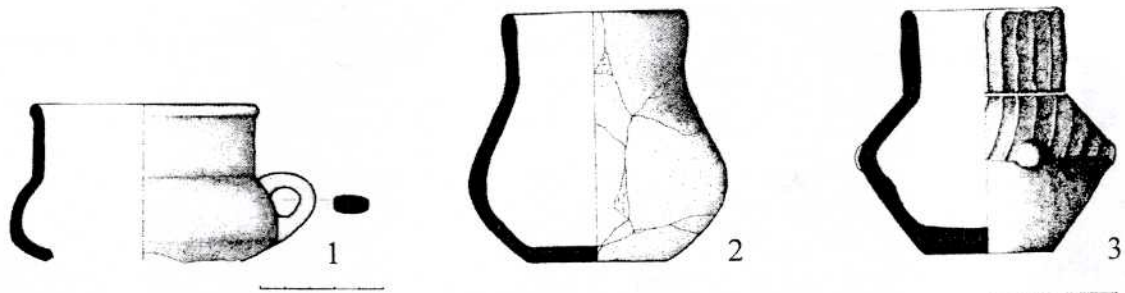
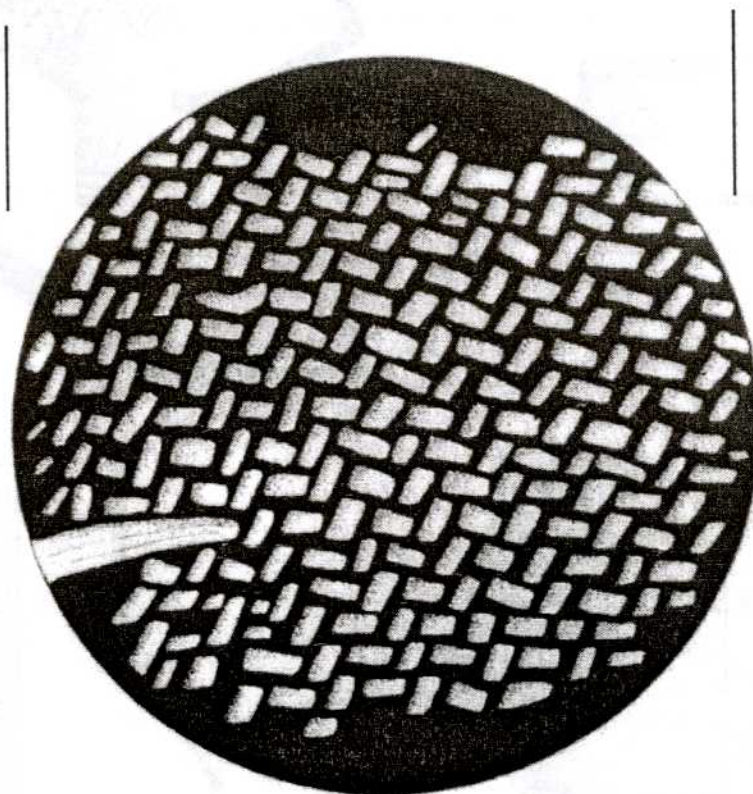
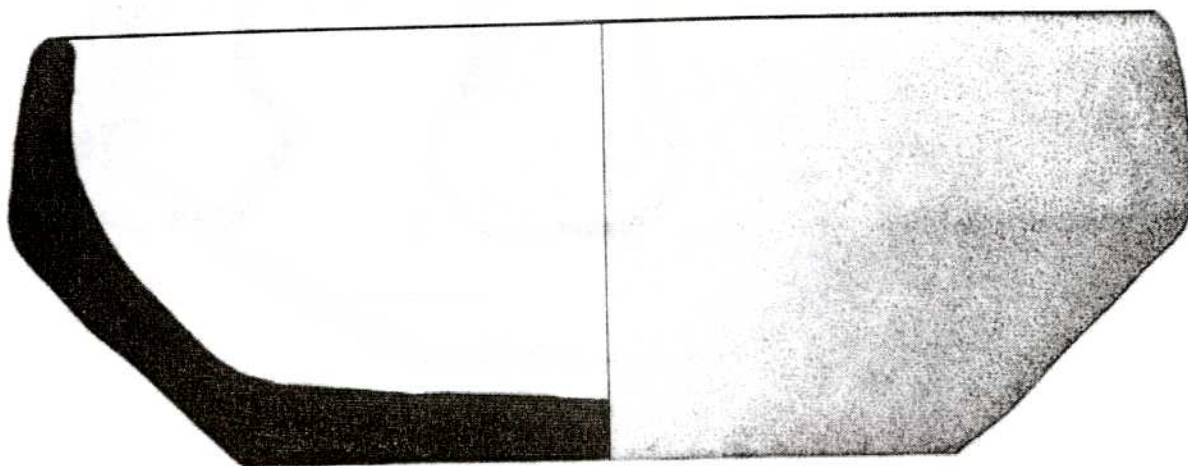


Fig. 11. Makri II. 1–2. Undecorated cups, 3. Cup with channeled decoration, 4. Vessel decorated with finger impressions, 5. Open-shaped vessel with incised decoration filled with white incrustation, 6. Vessel decorated with finger impressions, 7. Closed-shaped sharply carinated vessel with channeled decoration.

Sl. 11. Makri II. 1–2. Nedekorirane šolje. 3. Šolja sa kanelovanom dekoracijom. 4. Posuda ukrašena utiskivanjem prstom, 5. Posuda otvorenog oblika sa urezanim dekoracijom ispunjenom belom inkrustacijom, 6. Posuda ukrašena utiskivanjem prstom, 7. Oštro profilisana posuda zatvorenog čunastog oblika sa kanelovanom dekoracijom.



*Fig. 12. Vessel with matte im-
pressions on the flat base.*

*Sl. 12. Posuda sa otisci-
ma asure na ravnom dnu.*



Fig. 13. Part of trapezae decorated with incisions.

Sl. 13. Deo žrtvenika ukrašen urezivanjem.

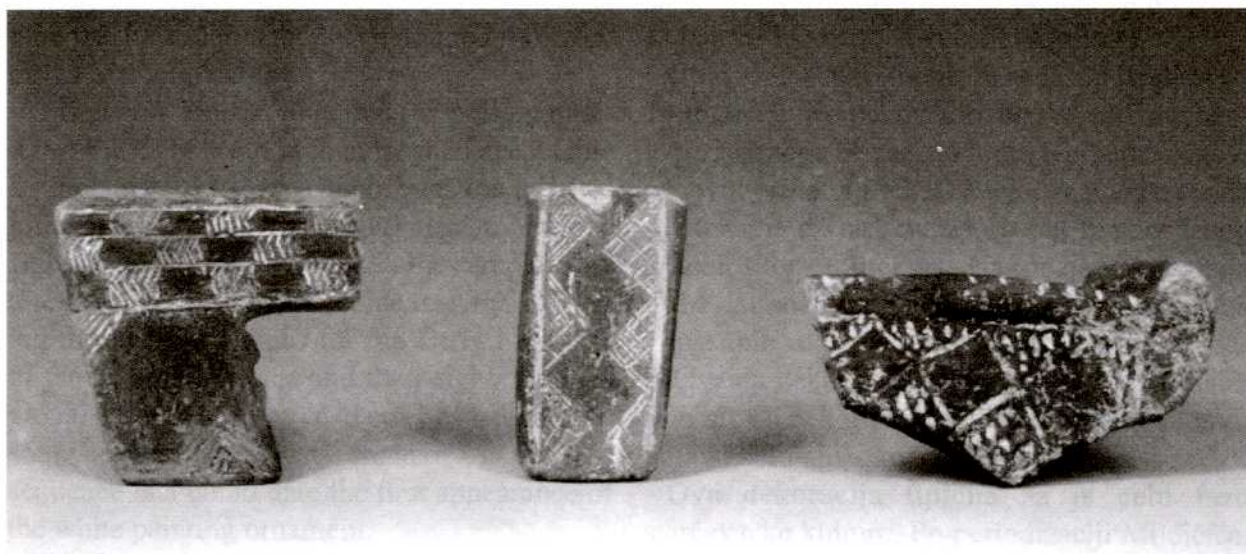


Fig. 14. Fragments of trapezae with incised decoration filled with white incrustation.

Sl. 14. Fragmenti žrtvenika sa urezanim dekoracijom ispunjenom belom inkrustacijom.